

For using the robot safely for many years

4 points to watch out for

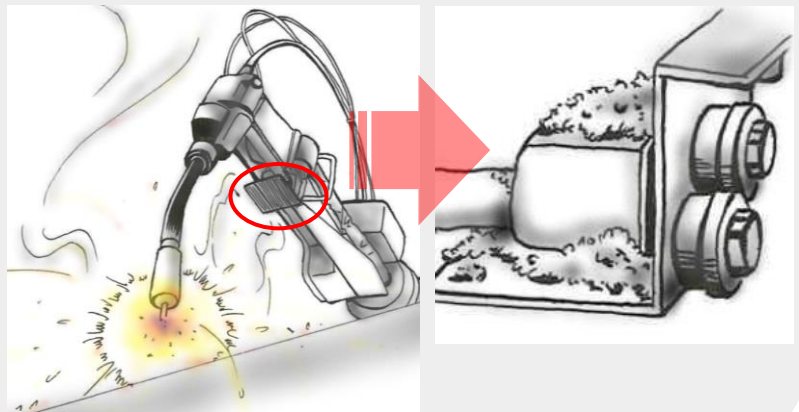
Periodic Cleaning Around the Torch

If the spatter generated during welding adheres and accumulates on the insulating parts of the torch, their surfaces may be carbonized.

Be sure to remove and clean the spatter from the torch at the daily checking.

A protection cover from the spatters is available. If you need it, contact our sales company or service agent.

If carbonization on insulating parts of the torch progresses, unexpected conductivity may be the cause of fire.



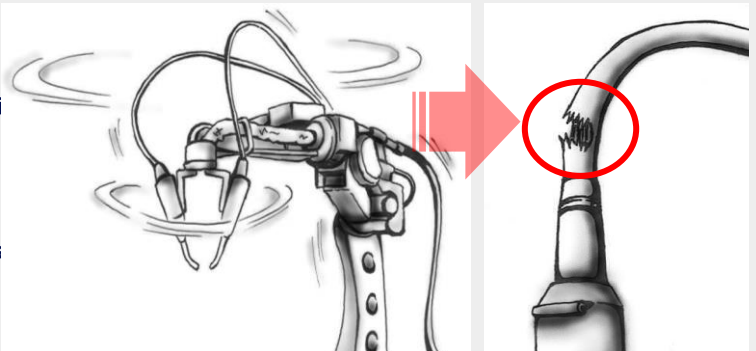
Periodic Check and Replacement of Flexible Conduit

Due to repeated pulling and twisting caused by robot movements, load applied may cause damage to the flexible-conduit.

Be sure to conduct periodical check to see if there is any damage to the flexible-conduit. Replacement required when damaged.

Even if there is no abnormality, it is recommended to replace it regularly (once a year) for preventive maintenance.

If the flexible-conduit is used in a broken state, exposed welding wire may touch the metal parts of the arm or jig, leading to an unexpected accident.



⚠ Note on Safety

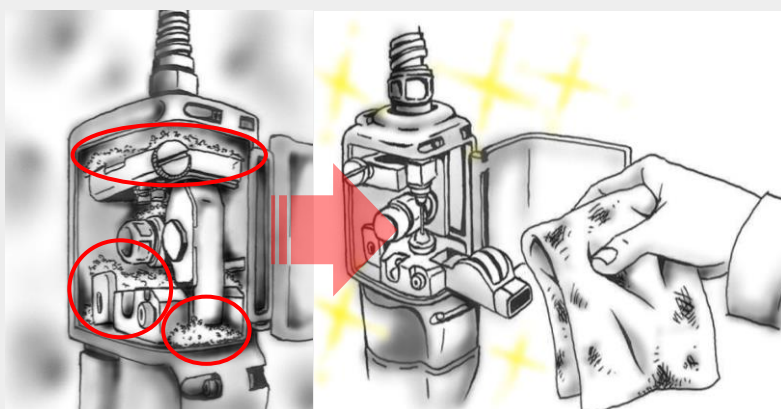
- Read the instruction carefully before use for proper use.
- Welding machine and robot controller should be installed in an indoor environment with a proper ventilation, and no flammable material near by.
- Be sure to wear safety equipment, in order to protect you and others from welding arc, spatter and slag generated during welding.
- In order to protect you and others from arc sound that is generated during welding, be sure to wear soundproof protective equipment.
 - If you perform a welding without soundproof protective equipment, you may develop an incurable noise-induced hearing loss.
 - Regarding type of soundproof protective equipment (earplug, earmuff), follow JIS T8161 (* soundproof protective equipment).

Daily check and cleaning inside feed unit

Wire feed control of TAWERS Super Active Wire Feed process may cause accumulation of scraped wire to build up inside the feed unit.

Be sure to clean the inside the feed unit during daily checking. To prevent metal dust from scattering, do not use an air blow, but wipe it off with a cloth soaked in alcohol.

Accumulated metal dust in the feed unit not only interferes wire feeding, but may also cause a ground fault between feed unit and the metal case.



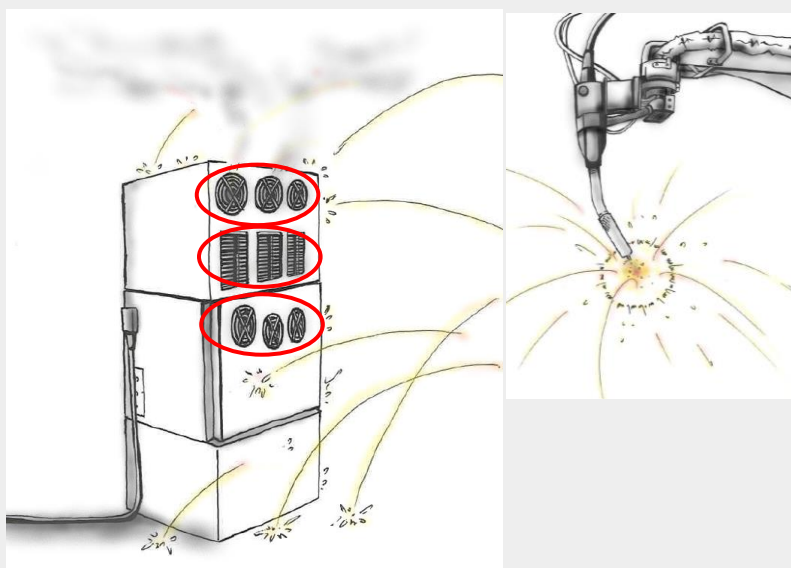
Regular Cleaning inside robot controller

The spatter generated during welding may scatter more than expected and enter inside robot controller through the opening.

Please consider installing partitions and covers. For installation, please consult our sales company or service agency.

Moreover, please inspect and clean inside of the controller regularly. Please contact our sales agent or service shop for periodic check and cleaning.

If the spatter entered inside the controller adheres to flammable materials, wind from colling fan may smolder end up causing a smoke.



Panasonic Connect Co., Ltd.
Process Automation Business Division
2-7, Matsuba-cho, Kadoma-shi, 571-8502 Osaka

Panasonic FS Engineering Co., Ltd.
4-1-8, Kounan, Minato-ku, 108-0075 Tokyo



0120-700-912

For inquiries, 9-12 A.M. and 12:45-17:00 P.M.
(excluding Saturday, Sunday, National holidays,
year end and new-year holidays, and our
designated holidays)

IR202307E01